



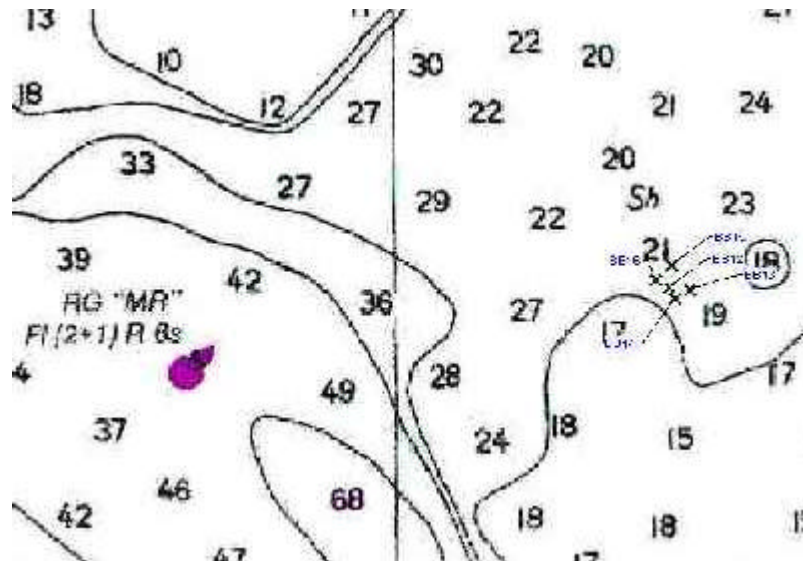
[The Daybreak Page](#)



[Daybreak Services](#)

The Somerset Oyster Sanctuary

- [Home](#)
- [Forums](#)
- [Fishing](#)
- [Hunting](#)
- [Kayaking](#)
- [Computing](#)
- [Electronics](#)
- [Contact us](#)

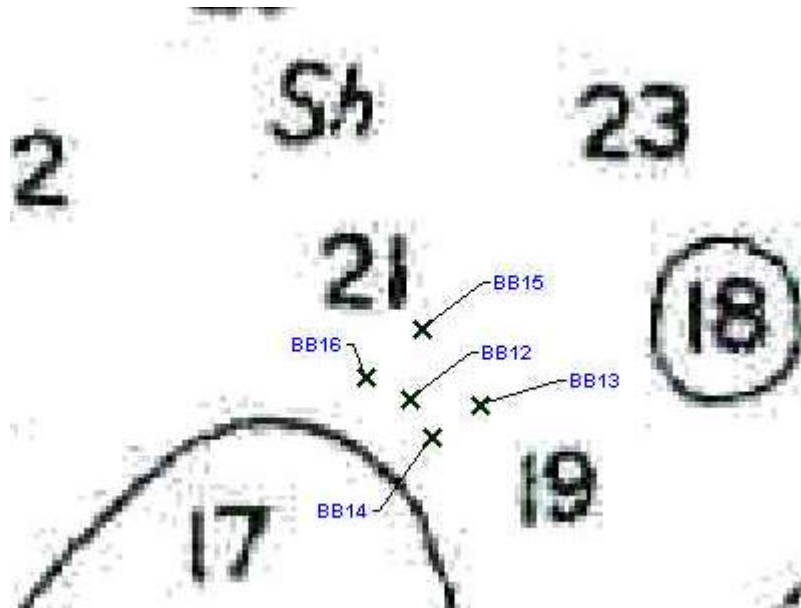


The Somerset Oyster Sanctuary near Crisfield, MD was built by Maryland's Department of Natural Resources in 2003. The area is closed to shellfish harvest. The reef is constructed of oyster shells and concrete igloos. The reef could hold tautog, croaker, trout, flounder, porgy, rockfish and sea bass. The reef area is located just east of MR buoy.

These are the coordinates for the boundaries of the sanctuary:

Point	Lat.	Long
A	38 02.433	075 54.617
B	38 02.717	075 54.267
C	38 02.500	075 54.000
D	38 02.217	075 54.350

This close-up map of the coordinates shows how the reef lies.



These are the coordinates for the groups of reef balls:

Name	Lat.	Long
BB12	38 02.383	075 54.423
BB13	38 02.379	075 54.377
BB14	38 02.363	075 54.410
BB15	38 02.417	075 54.415
BB16	38 02.393	075 54.451

Submit Comments or Questions to

daybreak@daybreakfishing.com

Copyright (c) 2004 Daybreak Services
All rights reserved.
Site Design by Daybreak Services